

Virginia Marching Band Cooperative
**2021 South County
Invitational**



South County High School
8501 Silverbrook Road
Lorton, VA 22079
Saturday, October 2nd, 2021

Contact Information

Kevin Engdahl

kengdahl@fcps.edu

Office: 703-446-1991

Cell: 571-435-4447

Event Information

Check-in/Registration: Please check in at the registration table upon arrival. They will provide you with wristbands for your students and staff, and you will meet your guide there.

Arrival: Your band should arrive at least 1 hour and 30 minutes prior to your scheduled performance time. You are welcome to arrive before the time listed on the schedule.

Warm Up Areas: There are three warm-up areas that will be used for the show. Unscheduled visual warm-ups will be allowed in the parking lot by registration. If you choose to do so, no playing or any sounds of any kind will be allowed.

Pit Parking: Pit trucks will unload in the parking lot by registration. Trucks will then move over to the HS grounds for parking (please see map).

Bus Parking: Students will be dropped off in the middle school bus loop. Buses will then move to the HS grounds for parking (please see map). Buses should take a RIGHT on Laurel Crest of the parking lot, then a right on Hooes Rd., and then a right on Silverbrook Rd. to get to the lot.

Prop Drop-Off and Staging: Props may be dropped off at the middle school and brought through rotation, however the walk is long. The other option is to drop them off at the HS and stage them near our football field. Please see the map below.

Gate Time: Your band must be at the band entrance gate 10 minutes prior to your scheduled performance (gate time listed on schedule)

Field Surface: Synthetic Turf

Awards Ceremony: Drum Majors and/or Band Representatives should assemble for the Awards presentation when the announcement is called. Awards will be given for the top three bands in each group and the top visual, music, GE, percussion, and guard in each group.

Concessions: Concessions will be available in the stadium during the event. Menus will be provided in the stadium, and will be in the show program.

Tickets: Admission is \$10. Children 5 and under are free. Cash and credit card are both accepted.

Feeding your Band: Due to local ordinances **no tailgating or grilling of any kind is permitted on the campus or in the surrounding area.**

Rain Plan: In the event of inclement weather VMBC and the Loudoun Invitational Event Coordinator will contact directors with delay, standstill, indoor performance or cancellation scenarios.

Staff/Adult Access into Stadium: You will receive a Band Director Badge. 15 wrist bands will be provided for additional staff, chaperone and pit crew members. All other adults must purchase a ticket to enter the stadium as a spectator.

Entry to the Stadium Following the Performance: Your band members, bus drivers, and chaperones are invited into the stadium after their performance free of charge. Entrance for band members in uniform, or in a group if out of uniform is through the main gate. While in the stadium, the band members are to sit in groups, with appropriate supervision. Bands may be asked to move to the visitor bleachers if paying supporters cannot find home side seating.

Spectator Parking: Spectator Parking will be available in the high school lot, with extra parking available on Laurel Crest.

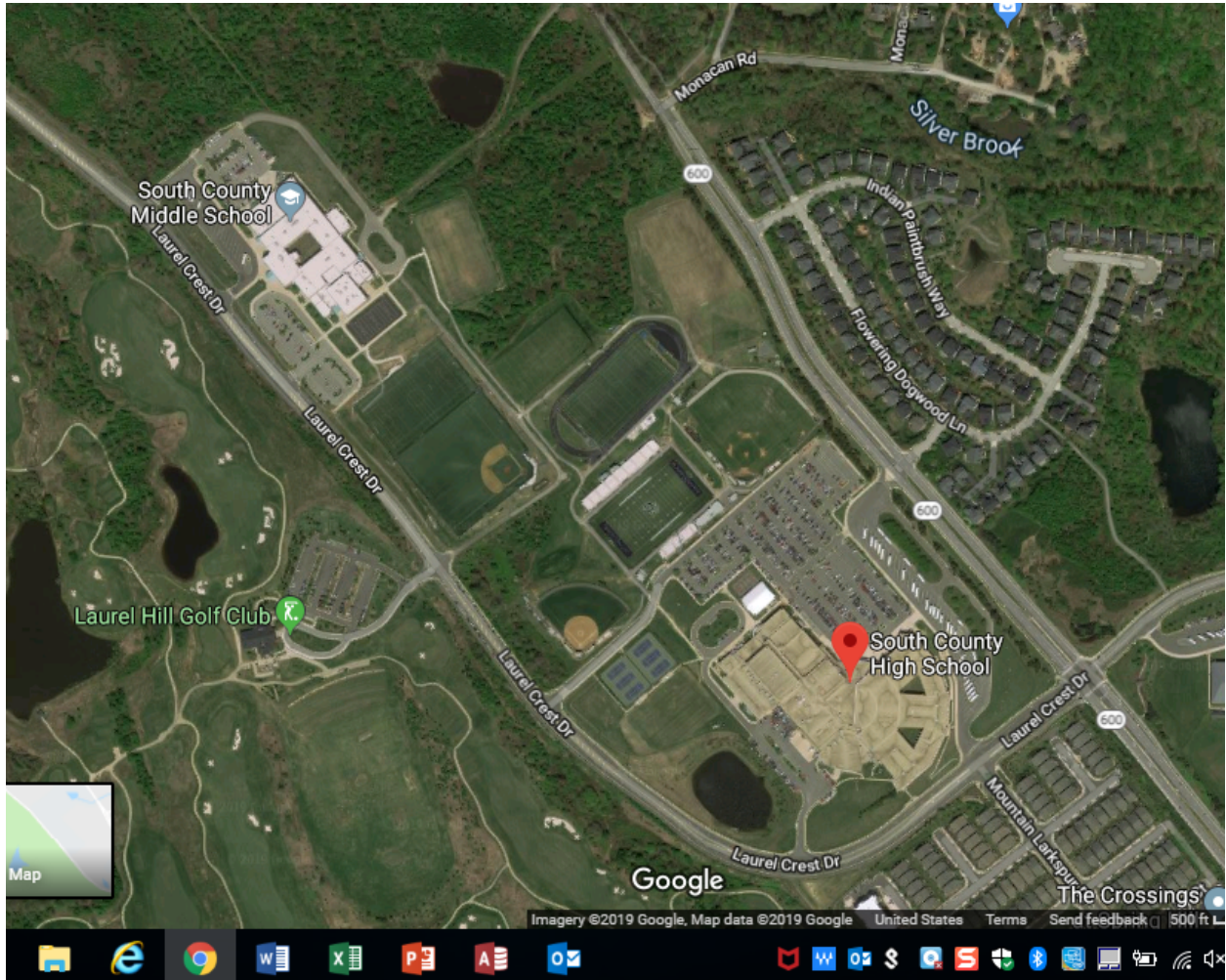
First Aid: We will have first aid parent volunteers on site if you need assistance.

Restrooms: Restrooms are available at the middle school for groups upon arrival, as well as in the stadium.

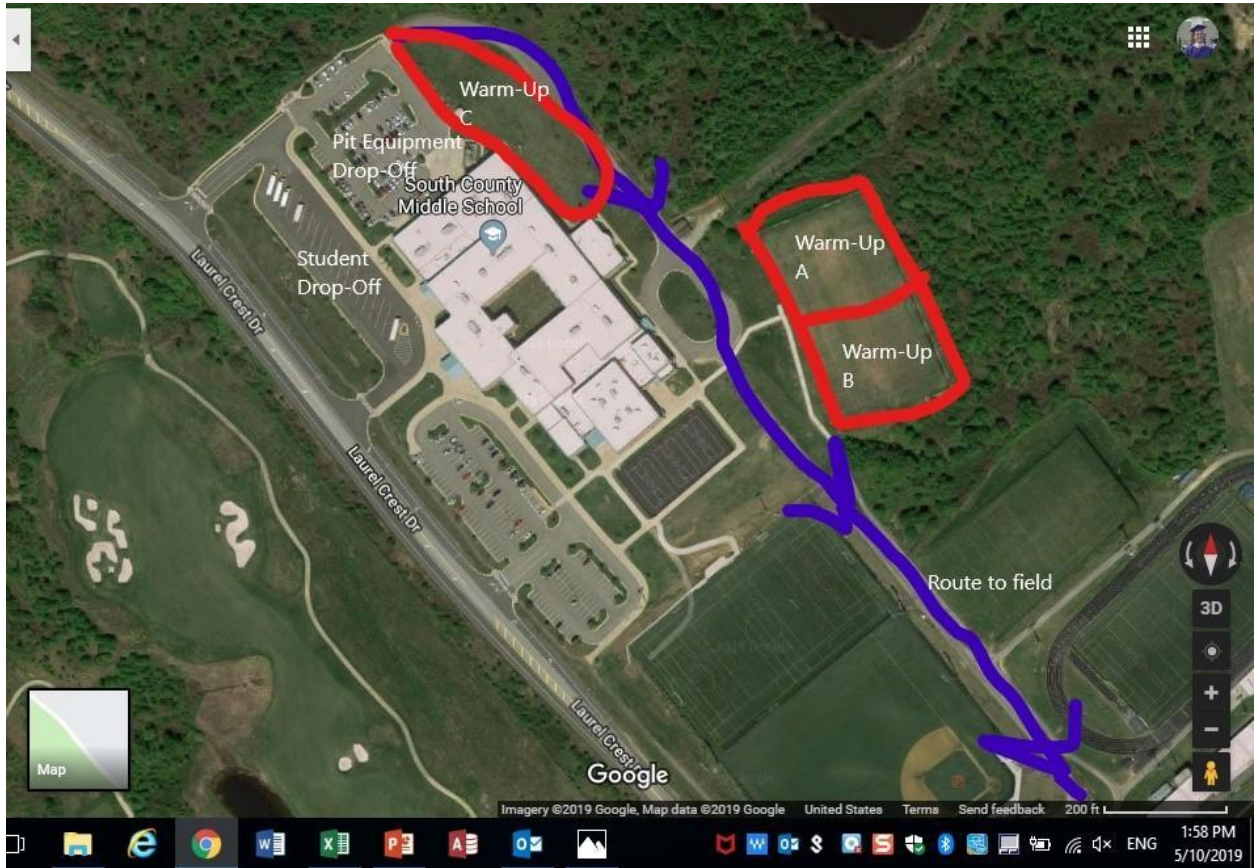
Video: You may send one designated adult to the press box to video tape your own show. They may go all the way up to the top of the box for a better view if they wish, but advised when asking your volunteers to go up, the stairs are very steep.

Please explain these guidelines to your staff, students, and supporters prior to the event. We appreciate your cooperation!

Grounds Map (MS and HS)



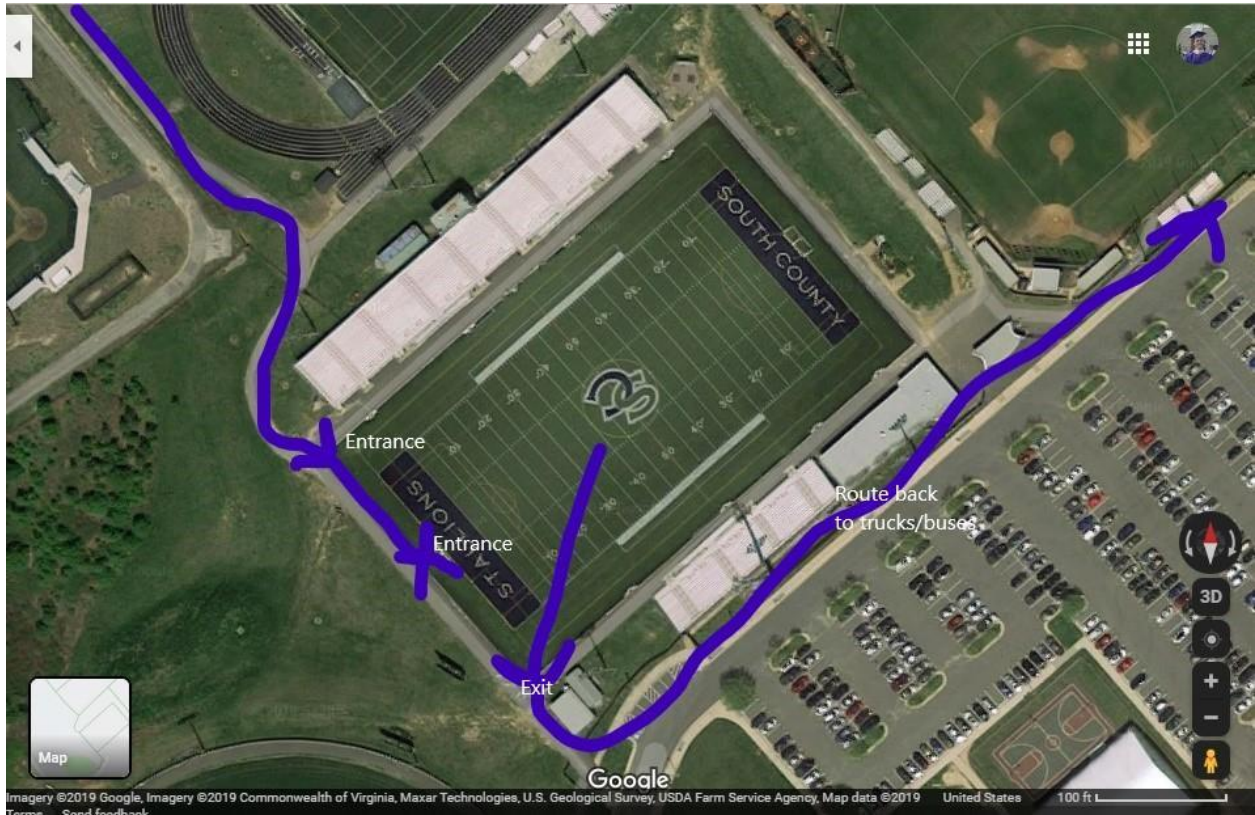
Middle School Map



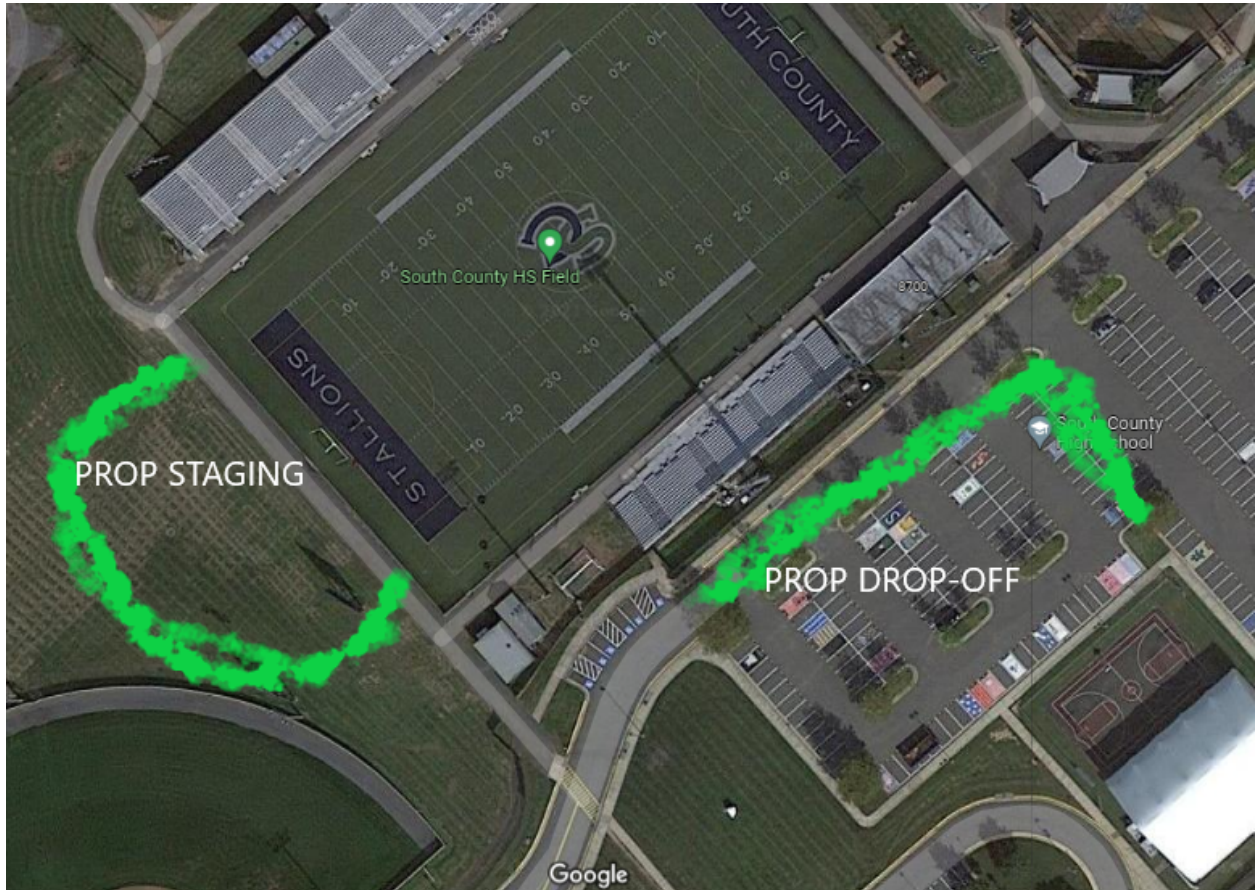
High School Map



Performance Flow Map



PROP DROP OFF AND STAGING



Final Schedule

	School	Class	# Buses	Equip Vehicles	Warmup Area	Arrive	Warm Up	Band Leaves Warm Up	Gate Time	Perform
	Welcome, Star Spangled Banner									
	1 West Springfield High School		4	5	2 A	1:30	1:55	2:40	2:50	3:00
	2 West Potomac High School		3	4	1 B	1:45	2:10	2:55	3:05	3:15
	3 Woodgrove High School		1	2	2 C	2:00	2:25	3:10	3:20	3:30
	4 Edison High School		1	2	1 A	2:15	2:40	3:25	3:35	3:45
	5 Falls Church High School		1	1	1 B	2:30	2:55	3:40	3:50	4:00
	BREAK									
	6 Rock Ridge High School		2	3	3 C	3:00	3:25	4:10	4:20	4:30
	7 George C Marshall High School		2	2	2 A	3:15	3:40	4:25	4:35	4:45
	8 Hayfield Secondary School		2	2	1 B	3:30	3:55	4:40	4:50	5:00
	9 Alexandria City High School		2	3	2 C	3:45	4:10	4:55	5:05	5:15
	BREAK									
	10 Oakton High School		3	3	2 A	4:15	4:40	5:25	5:35	5:45
	11 South Lakes High School		3	4	2 B	4:30	4:55	5:40	5:50	6:00
	12 Dominion High School		3	4	2 C	4:45	5:10	5:55	6:05	6:15
	13 James W. Robinson Secondary School		3	4	2 A	5:00	5:25	6:10	6:20	6:30
	14 Hemdon High School		3	3	1 B	5:15	5:40	6:25	6:35	6:45
	15 Briar Woods High School		3	4	2 C	5:30	5:55	6:40	6:50	7:00
	Dinner									
	Dinner									
	Dinner									
	16 Independence High School		4	3	2 A	6:30	6:55	7:40	7:50	8:00
	17 W.T. Woodson High School		4	4	2 B	6:45	7:10	7:55	8:05	8:15
	18 Chantilly High School		4	4	2 C	7:00	7:25	8:10	8:20	8:30
	19 John Champe High School		4	5	2 A	7:15	7:40	8:25	8:35	8:45
	20 Langley High School		4	3	1 B	7:30	7:55	8:40	8:50	9:00
	21 SCHS				C		8:10	8:55	9:05	9:15
	Awards									
	Awards Done									

Concessions Menu



2021 South County Invitational

CONCESSIONS

Main

Jersey Mike's 4" sub-turkey or veggie	\$6.00
Pizza Slice: cheese	\$3.00
Pizza Slice: pepperoni	\$3.00
Hot Dog	\$3.00

Snacks

Candy	\$2.00
Chips	\$1.00
Cookies	\$2.00

Drinks

Sports Drink	\$3.00
Soda (12 oz cans)	\$2.00
Bottled Water	\$1.00
Coffee	\$2.00
Hot Chocolate	\$2.00